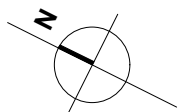
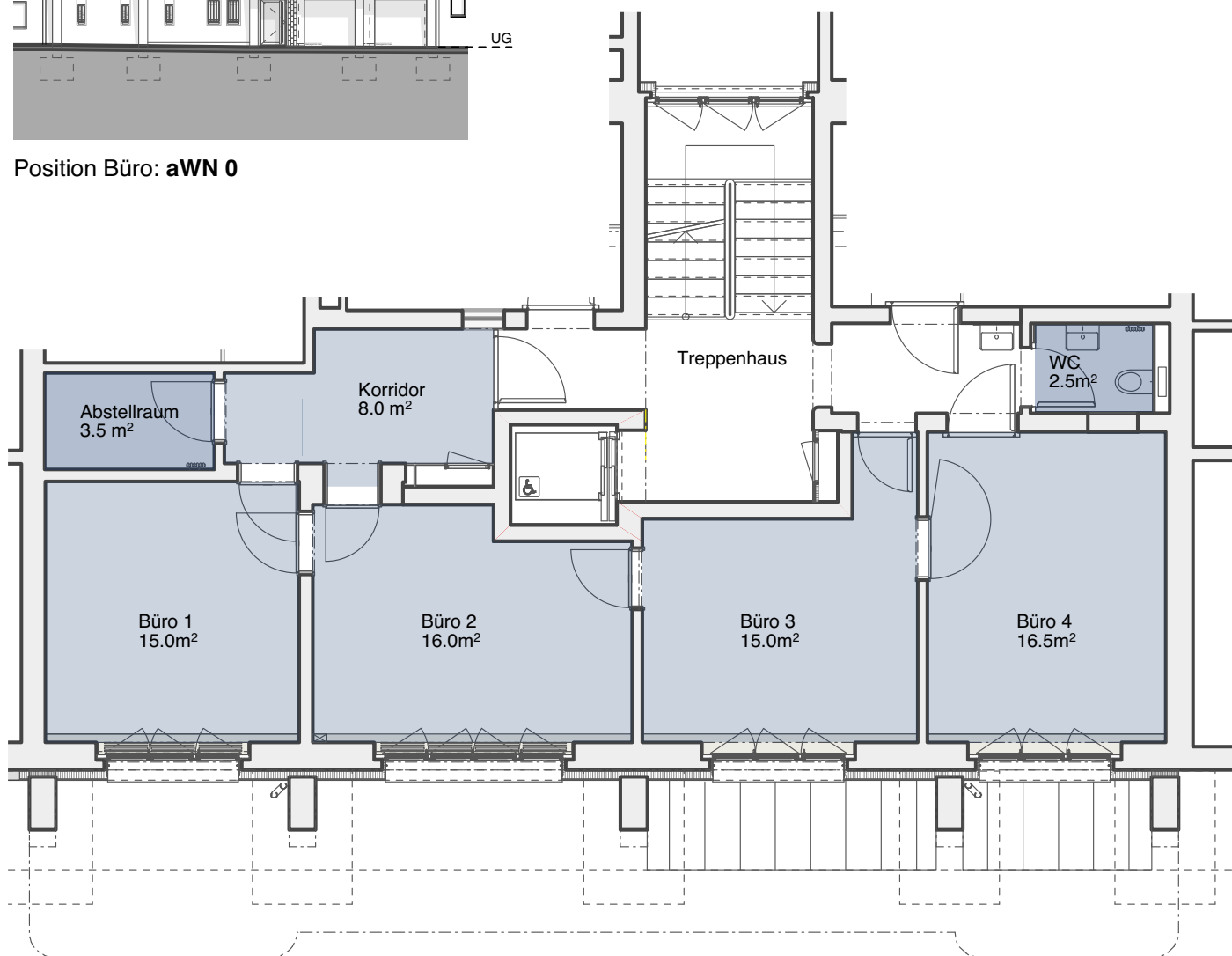
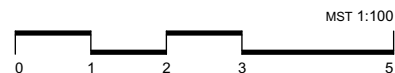


Position Büro: aWN 0



±0.00 = OK.F.Boden Treppenhaus Niederparterre = 423.72 m.ü.M



MFH Sumatrastrasse 3, 8006 Zürich		Vermarktungsplan aWN 0		561-xxxx M.1:100
VAUDOISE GÉNÉRALE	Datum: 15.04.2020	Masswerk Architekten AG	T +41 (0)41 311 19 19	MASS WERK
Compagnie d'Assurances SA	Format: A4	Brünigstrasse 25	F +41 (0)41 311 19 20	
Service Constructions	Gezeichnet: tku	CH - 6005 Luzern	www.masswerk.com	
Place de Milan, CH -1001 Lausanne	Revidiert: 22.04.20	561_Grundriss_Schnitt_50	mail@masswerk.com	