

W o h n ü b e r b a u u n g L ö w e n m a t t e i n M ü n s i n g e n

Bernstrasse 30

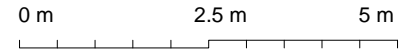
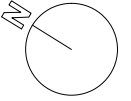
Erdgeschoss und 1. Obergeschoss

WHG-Nr.: 3011 / 3021

2 ½ Zimmer Wohnung

Hauptnutzfläche: 65.50 m²

Loggia: 11.30 m²



Parkett

Platten

