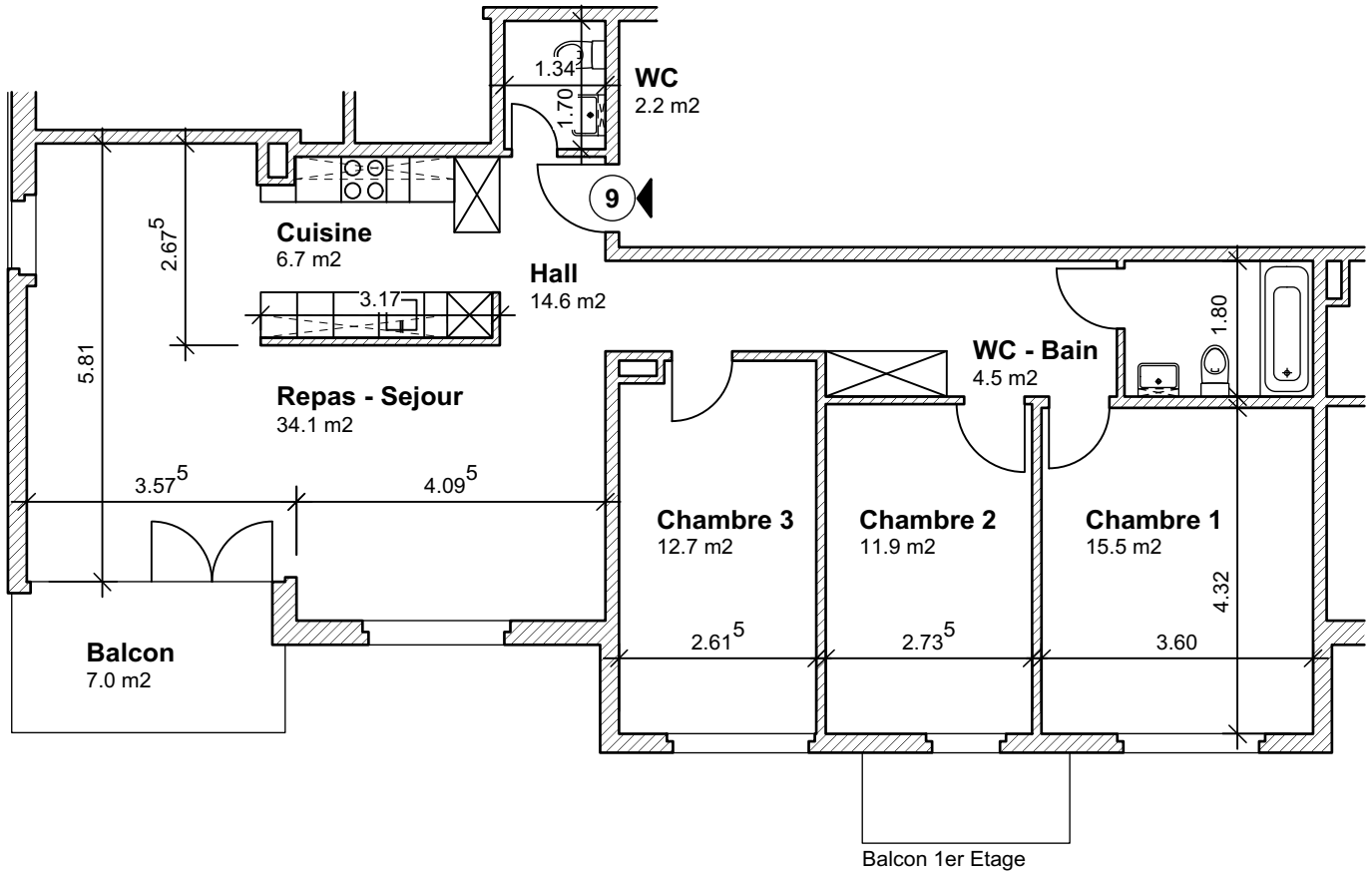


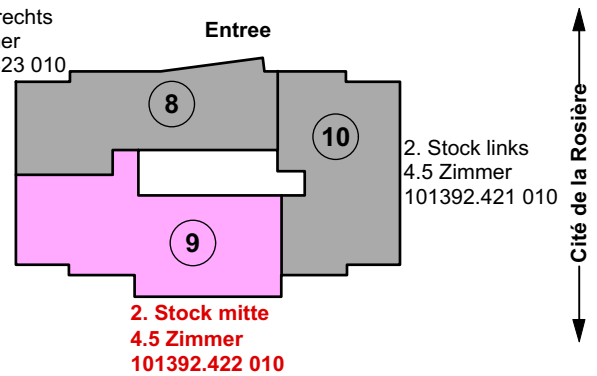
Legende:

Hall:	14.6 m ²
WC:	2.2 m ²
Cuisine:	6.7 m ²
Repas - Sejour:	34.1 m ²
Chambre 3:	12.7 m ²
Chambre 2:	11.9 m ²
Chambre 1:	15.5 m ²
WC - Bain:	4.5 m ²
102.2 m²	

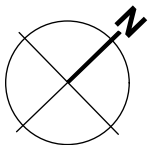
Balcon: 7.0 m²



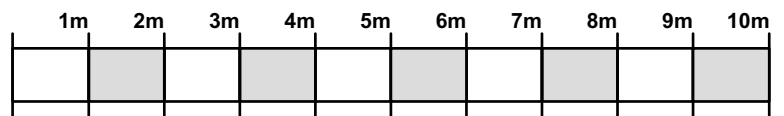
2. Stock rechts
3.5 Zimmer
101392.423 010



2. Stock mitte
4.5 Zimmer
101392.422 010



Route d'Yverdon



Mehrfamilienhaus Cité de la Rosière 1, 1470 Estavayer - le - Lac

Vermietungsplan: 2. Stock mitte / 4 1/2 Zimmerwohnung / 101392.422 010

Masstab

1:100

Plangröße

21 x 30 cm

Erstelldatum

16.10.2015