

# HAUS A

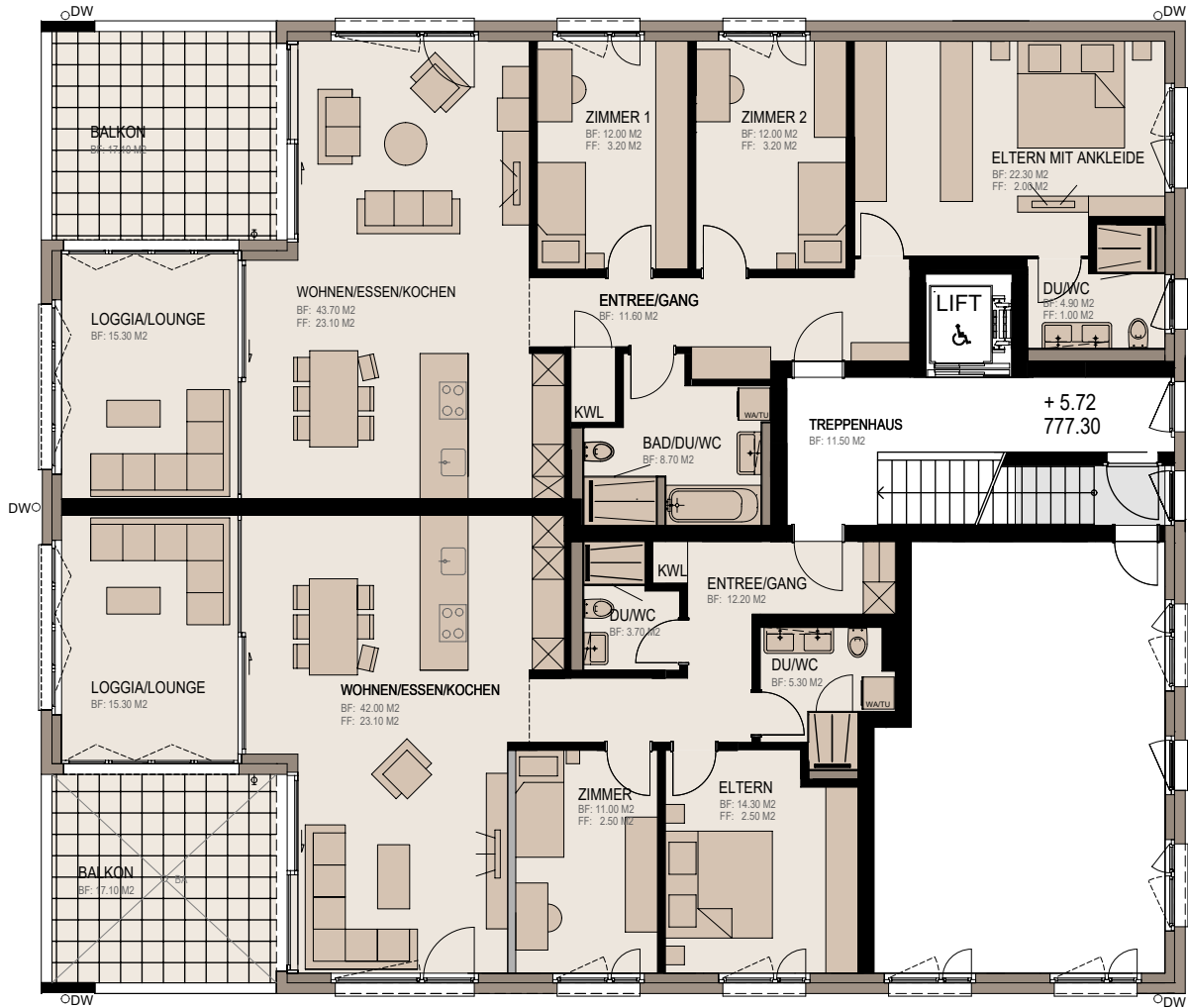
# 4 1/2 Zimmer - Loggiawohnung

2. OBERGESCHOSS



**A22**

|                   |                       |
|-------------------|-----------------------|
| Nettowoohnfläche  | 132.90 m <sup>2</sup> |
| Bruttowoohnfläche | 138.30 m <sup>2</sup> |
| Balkon            | 17.10 m <sup>2</sup>  |

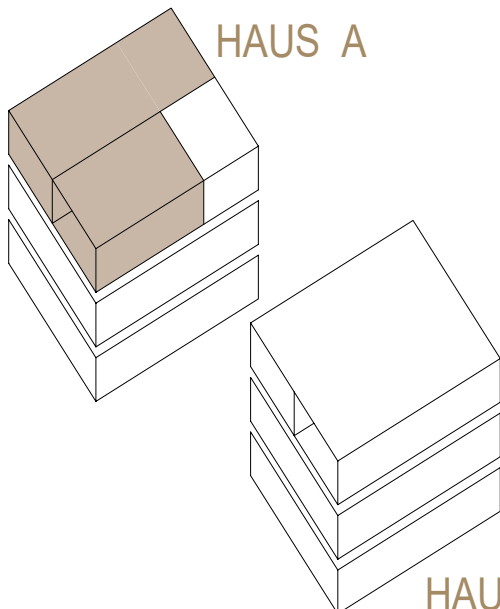


# HAUS A

# 3 1/2 Zimmer - Loggiawohnung

**A21**

|                   |                       |
|-------------------|-----------------------|
| Nettowoohnfläche  | 104.00 m <sup>2</sup> |
| Bruttowoohnfläche | 109.00 m <sup>2</sup> |
| Balkon            | 17.00 m <sup>2</sup>  |



# HAUS B