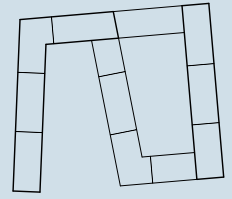
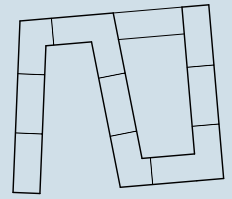


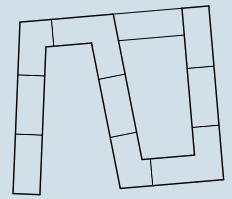
6. OG



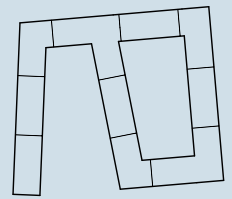
5. OG



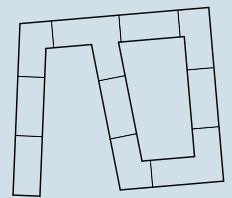
4. OG



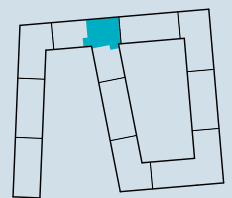
3. OG



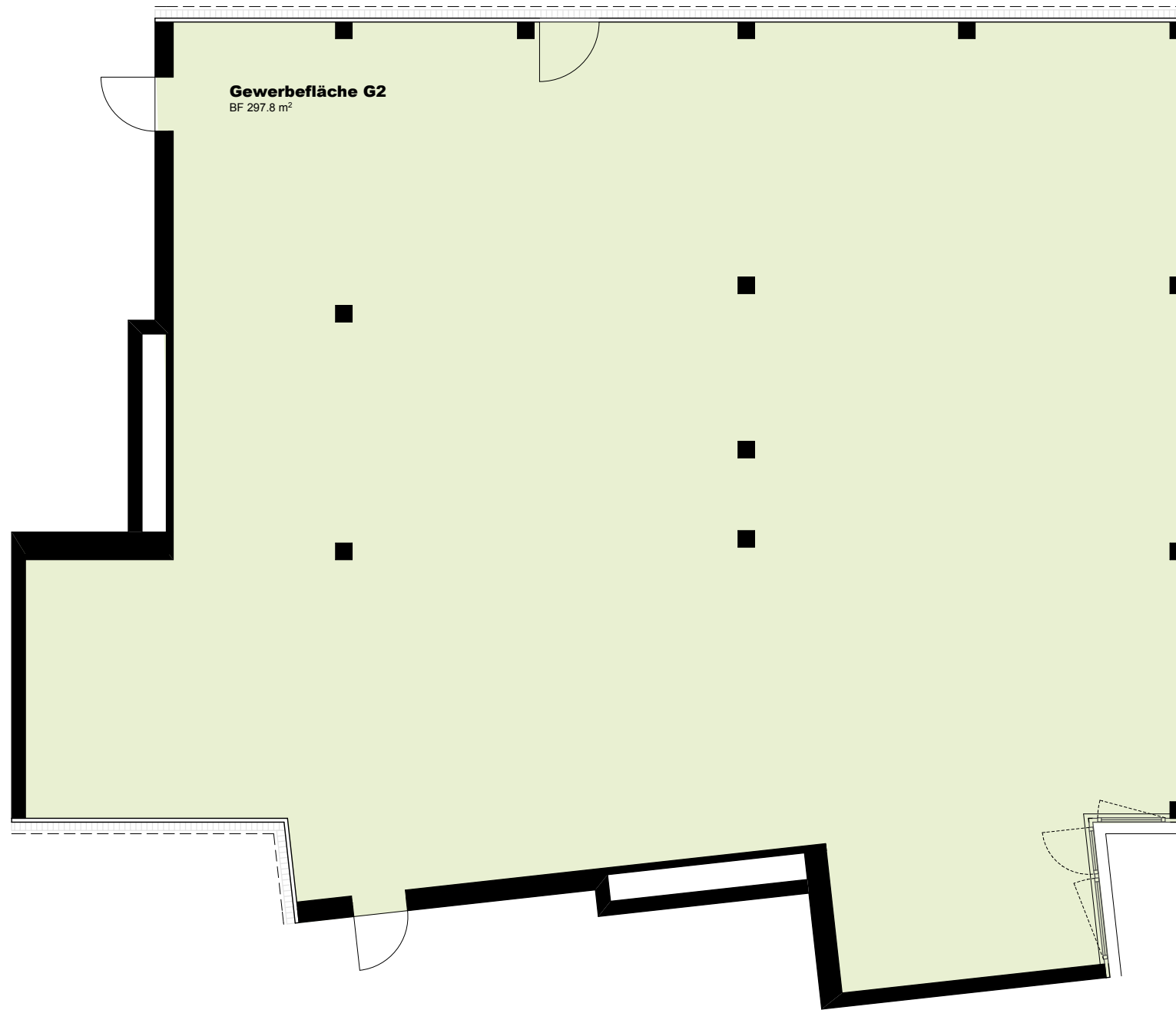
2. OG



1. OG



EG



Gewerbefläche, Typ Virgo

Nettonutzfläche	ca. 297.8 m ²		
Erdgeschoss	Nettomiete	NK	Bruttomiete
T4-G2	CHF 5'640.-	CHF 650.-	CHF 6'290.-

